

Gather.Town is **ONLY** supported by Chrome and Firefox.

We understand that a virtual platform reduces the opportunity to have those chance encounters and hallway chats that often take place at an in-person event. We are, therefore, using Gather.Town, as a means of facilitating face-to-face interaction.

Join us in Gather.Town for Posters and Exhibits in the park! You will be able to bump into colleagues and friends, have chance encounters with other conference attendees, and strike up conversations with your fellow researchers, just like you would at an in-person event.

You will be able to select a character, search for specific attendees, or just wander around the 2D style space by walking in and out of conversations, just as you would in real life. As you move around the space with your keyboard arrows, the webcam video and microphone audio of the other people in the room increases or fade based on your distance to their character, mimicking walking the hallways at an in-person conference.

You will only be able to enter Gather.Town via the conference platform (EventPilot). All poster presentations and exhibitors have a link plus there is a link from the Welcome Page. If your browser asks for your permission to use microphone and camera, please answer "Allow". This is how others will be able to see and speak to you. Then select "Join the Gathering".



Sign in with the same email used to enter the main conference platform (EventPilot). Do **NOT** Sign in with Google. You will be sent an email with a password to enter the site. Unfortunately, every time you enter into the system you may have to take these steps.

The space will be available on a 24-hour basis until **8 February 2022**. We suggest that you visit Gather.Town prior to the first poster session on Monday, so that you are comfortable using and navigating the space.

During the conference, feel free to use the space anytime to organize small meetings with other conference attendees, run into friends, meet new friends, or just hang out in the desert exploring new frontiers.

We hope you enjoy this feature of the conference and are able to visit with your colleague's, meet old friends, and make new friends.

You can watch our brief [video demonstration](#) of the space.

Welcome to Gather!

Sign in with Google

or

Email

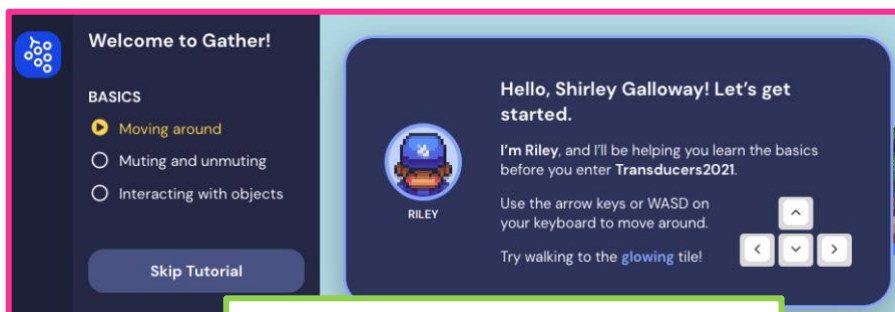
Enter your email address

Sign in with email

Enter your code

We just emailed sgalloy@pmmconferences.com with a 6-digit code. If you don't see it, please check your spam folder or [resend code](#).

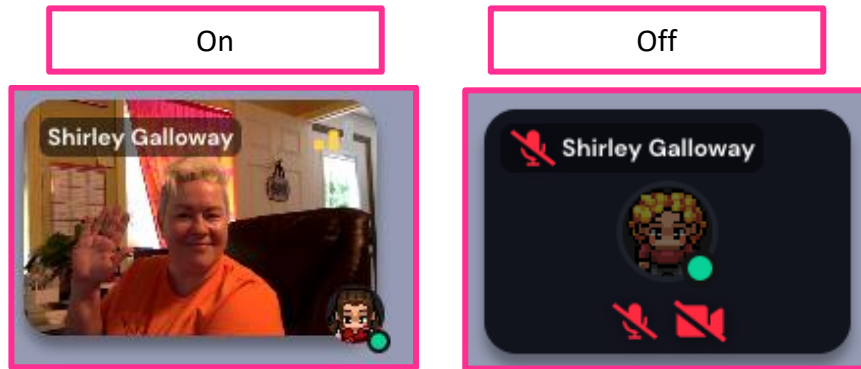
0 0 0 0 0 0



TIP! We suggest you go through their quick tutorial to learn the basic features.

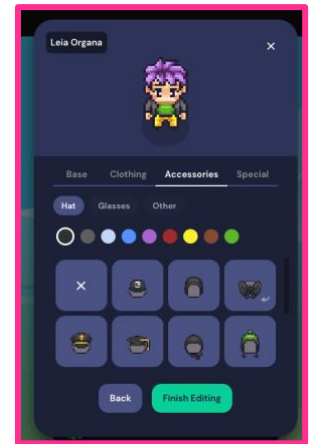
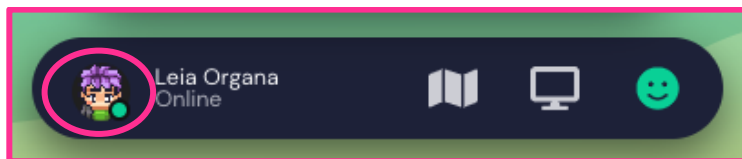
Enable/disable your audio and video

After signing in, you will see yourself in the bottom right corner window. This is where you can enable/disable your audio/video. Please keep in mind if you turn these off others will not be able to communicate with you.



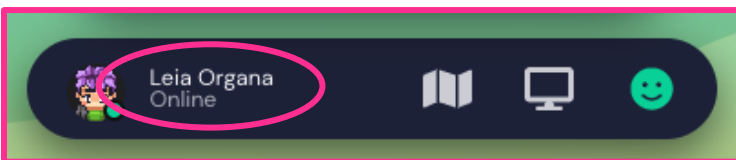
Change Character

If you should decide to change your character, click the character icon in the bottom menu to select another one.

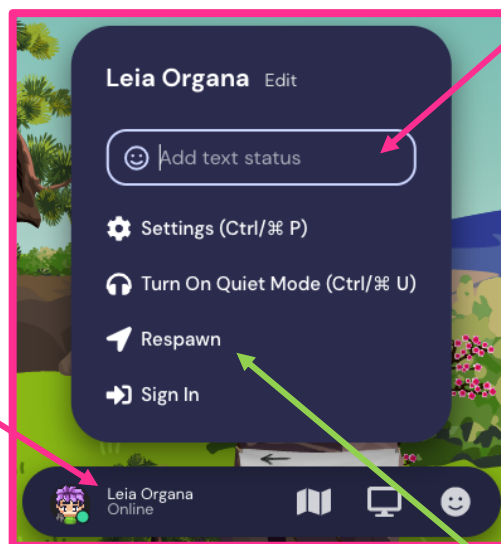


Add Affiliation so it Shows in Participant List

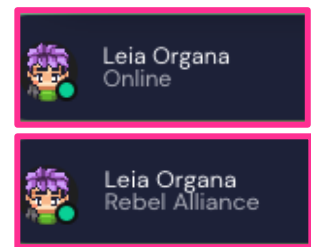
We recommend that you add your affiliation to your avatar.



Step 2: Add affiliation here



Step 1: Click your name



Your affiliation will now show in the Participant's list on the left side panel

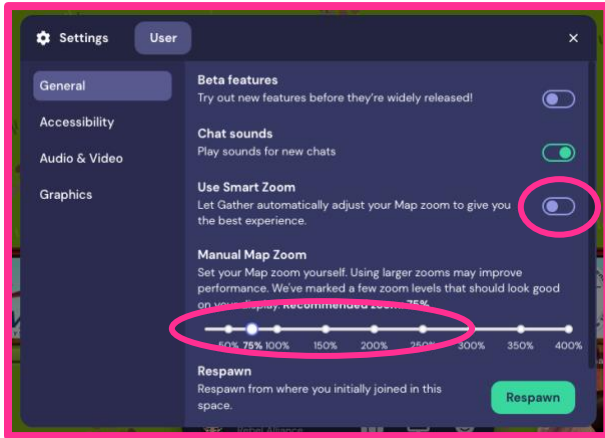
TIP! If you are not sure where you are in the space, select Respawn and it will take you back to the koi pond in the park where exhibits and poster entrances are.

Continued on next page



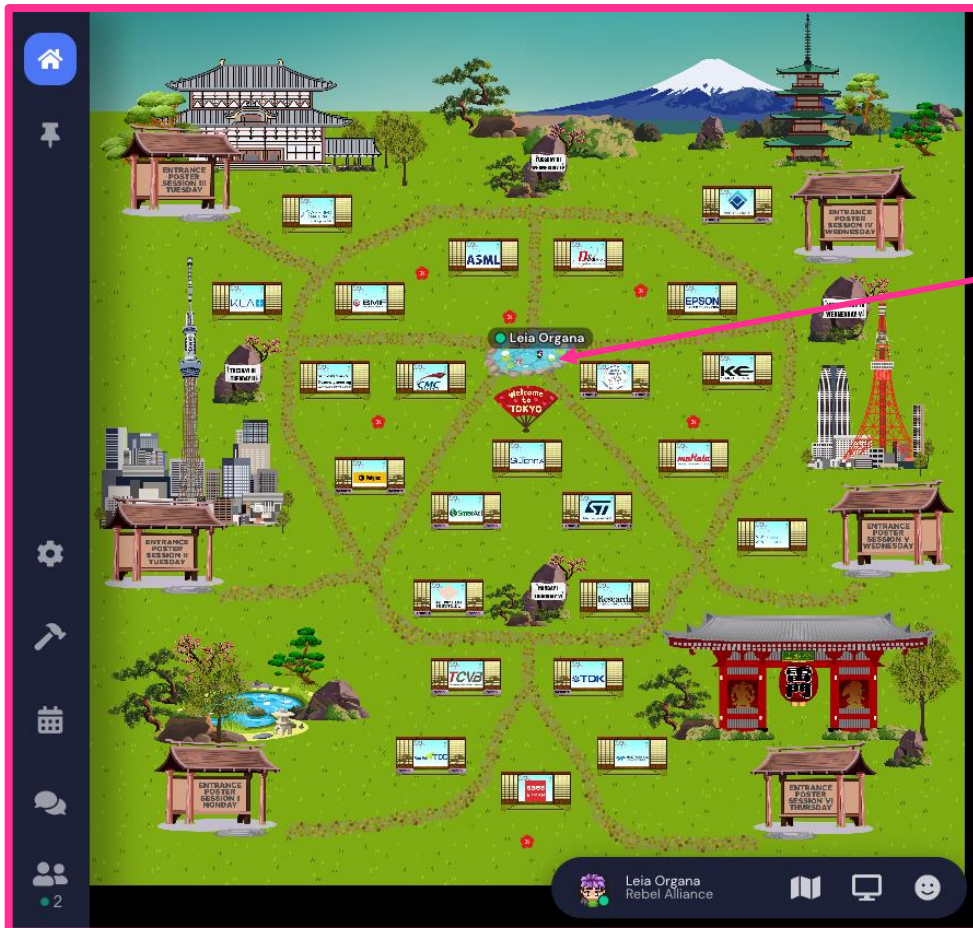
Location

When you first enter Gather.Town you will be in a koi pond in the center of a park where exhibits and poster entrances are located. You will need to walk around following the paths and directional signs to the different poster rooms and use the portal doors to enter. Gather.Town allows you to zoom out and see the entire space at once. Select the Settings icon and under General, turn off the Use Smart Zoom feature and then you set your map zoom. This works inside the poster rooms too.



TIP! When you leave Gather.Town and return, you will re-enter where you were last located. You may respawn to return to the koi pond.

Here is a map overview of the space in Gather.Town showing all exhibits and poster entrances.



The koi pond is the starting point for Gather.Town.

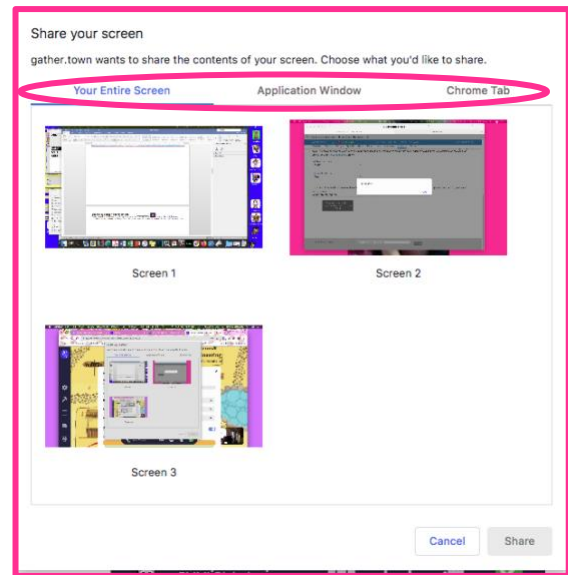
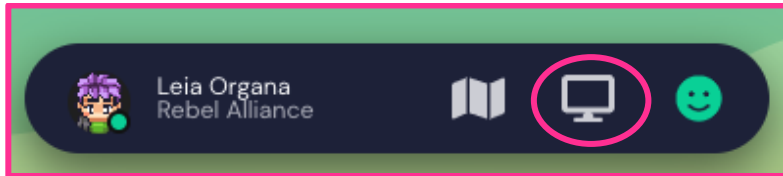
Your avatar shows in the space to give you an idea of where you are.

Continued on next page



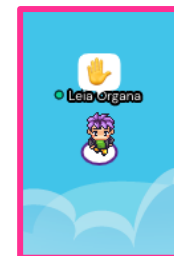
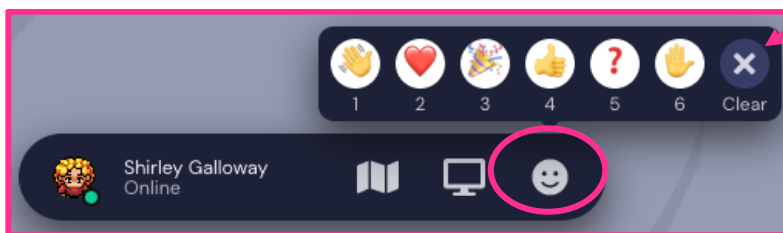
Screen Share

You may want to share your screen and show additional information. You will have the option to select/share your entire screen, an application window (i.e. PowerPoint), or a tab in Chrome. We recommend you practice this prior to the conference.



Raise Your Hand

There is an option to raise your hand. Select the smiley face in the bottom bar and double click the hand. When you do so, a hand will appear next to your avatar and next to your name in the participant list. You will need to click on the Clear X button to remove it from above your avatar.



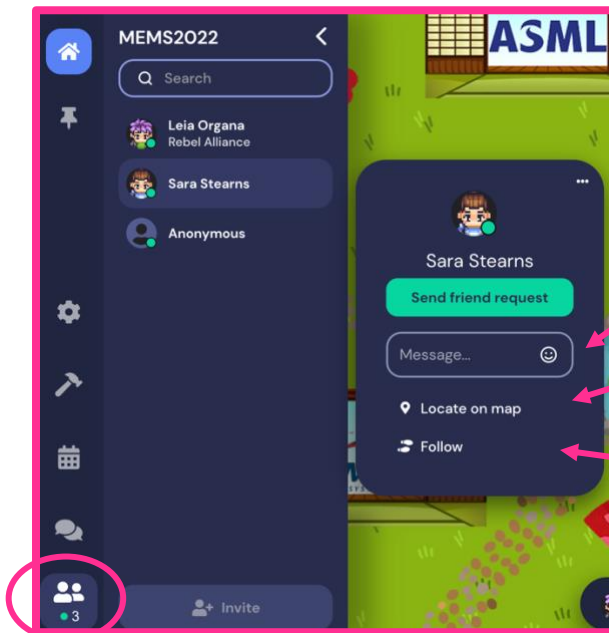
As you see, there are other icons in this section you can use. They will appear briefly and will then disappear.

Continued on next page



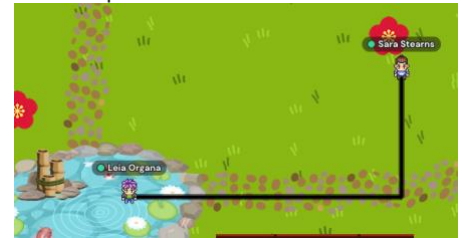
Search for an Attendee

You can search for a specific person by their name in the "Participants" icon on the left. There are three ways to contact them. If you use the locate and follow options you will need to turn them off once you find the person or you will be tethered to them.



1. Select "Message" to chat directly.

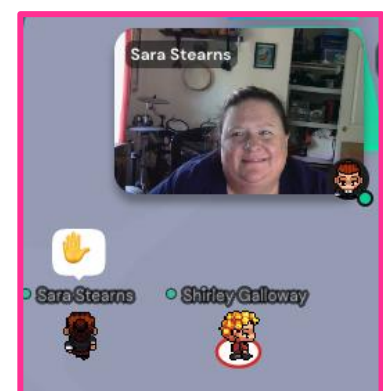
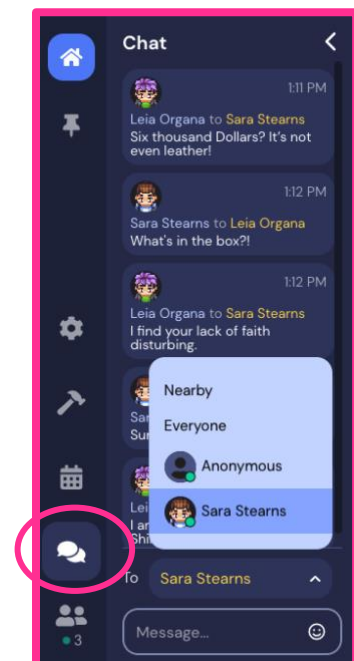
2. Use "Locate on map" to see a path to find the person.



3. Use "Follow" and the system will automatically take you to the person.

Messaging/Chat Feature

You can chat with a specific person or to everyone. Please use the "everyone" feature sparingly.



Video Chat

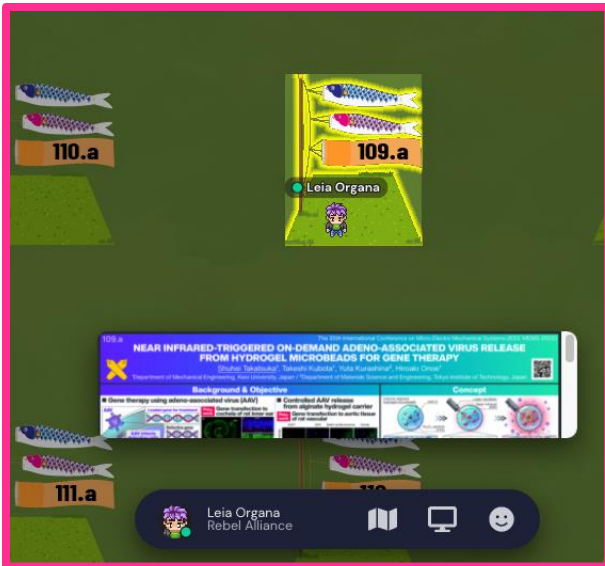
As you get closer to another attendee, their camera will become clear and you can video chat with that person. You will need to make sure your camera and microphone are turned on for this feature.

Continued on next page



Private Space

When you step in a private space, a note will be shown at the bottom "You have entered a private space" and the non-private space will dim around it. In private spaces, you can only chat with the people who are in the same private space. All Exhibits and Poster grass spaces are private spaces.

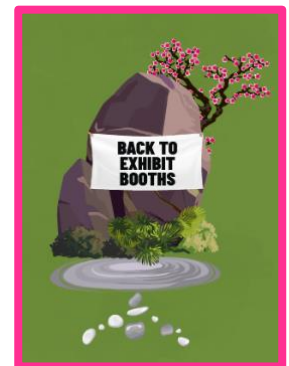


Poster Presentations

When you approach an individual poster area, the poster will pop up at the bottom. Press the "X" button on your keyboard and the full poster will open.

You will need to be on the light grass area to hear the poster presentation and ask the presenter questions.

To leave a poster room you will need to locate the portal at the bottom right in the room and walk into it. This will bring you to a random location within the main hub/park. You may also respawn to go back to the koi pond.



Exhibitor Material

When you walk up to one of the bonsai trees, once it highlights in yellow, press the "X" button on your keyboard to open it. The material may be a handout, web page or video.

